



**Executive Board – Supplementary  
Agenda**

**Thursday, 16 November 2017 2.00 p.m.  
The Boardroom, Municipal Building**

A handwritten signature in black ink, appearing to read 'David W R'.

**Chief Executive**

**ITEMS TO BE DEALT WITH  
IN THE PRESENCE OF THE PRESS AND PUBLIC**

**PART 1**

<b>Item</b>	<b>Page No</b>
<b>9. PHYSICAL ENVIRONMENT PORTFOLIO</b>	
<b>(A) DRAFT DELIVERY AND ALLOCATIONS LOCAL PLAN - APPROVAL FOR PUBLIC CONSULTATION</b>	<b>1 - 6</b>

**10. SCHEDULE 12A OF THE LOCAL GOVERNMENT ACT 1972  
AND THE LOCAL GOVERNMENT (ACCESS TO  
INFORMATION) ACT 1985**

**PART II**

In this case the Board has a discretion to exclude the press and public and, in view of the nature of the business to be transacted, it is **RECOMMENDED** that under Section 100A(4) of the Local Government Act 1972, having been satisfied that in all the circumstances of the case the public interest in maintaining the exemption outweighs the public interest in disclosing the information, the press and public be excluded from the meeting for the following item of business on the grounds that it involves the likely disclosure of exempt information as defined in paragraphs 3 and 5 of Part 1 of Schedule 12A to the Act.

**11. HEALTH AND WELLBEING PORTFOLIO**

**(A) CLOSURE OF MILLBROW CARE HOME**

7 - 12

*In accordance with the Health and Safety at Work Act the Council is required to notify those attending meetings of the fire evacuation procedures. A copy has previously been circulated to Members and instructions are located in all rooms within the Civic block.*

<b>REPORT TO:</b>	Executive Board
<b>DATE:</b>	16 November 2017
<b>REPORTING OFFICER:</b>	Strategic Director – Enterprise, Community and Resources
<b>SUBJECT:</b>	Draft Delivery and Allocations Local Plan - Approval for public consultation
<b>WARDS:</b>	Borough-wide

## **1. PURPOSE OF THE REPORT**

- 1.1 Approval is sought to publish the Delivery and Allocations Local Plan (DALP) (incorporating revised Core Strategy policies) Consultation Draft Document, (the “draft DALP”) for a period of public consultation. Public consultation is a statutory stage in local plan production. This formal period of public consultation is pursuant to Regulation 19 of the Town and Country Planning (Local Planning) (England) Regulations 2012.

## **2. RECOMMENDATION: That**

- (1) the draft DALP be approved for the purposes of a minimum of a six-week period of public consultation;**
- (2) the Strategic Director – Enterprise, Community and Resources in consultation with the Portfolio Holder for Physical Environment are delegated powers to approve editorial and technical amendments that do not materially affect the overarching development strategy as currently set out in the document;**
- (3) the results of the public consultation exercise are reported back to the Executive Board.**

## **3. SUPPORTING INFORMATION**

- 3.1. This item was previously submitted for to the 19th October 2017 meeting of the Executive Board. The Board resolved to defer the item to allow further time for consideration. That previous report set out the background to the production of the draft DALP, together with the statutory requirements and consultation stages that the Plan will be subject to before it can be adopted by the Council and form part of the statutory Development Plan for the Borough.
- 3.2 This will be the first of at least two public consultations on the content of the draft DALP.

3.3 The draft DALP consultation will be supported by the publication of a variety of supporting documents;

- Infrastructure Plan
- Sustainability Appraisal (SA).
- Habitat Regulations Assessment.
- Health Impact Assessment (HIA).
- Equality Impact Assessment (EqIA).
- Statement of Consultation.

#### **4 PUBLIC CONSULTATION**

4.1 The DALP Consultation Draft document will be published for a period of public consultation, commencing as soon as practicable following approval, in compliance with the Town and Country Planning (Local Development) (England) Regulations 2012 and the Council's adopted Statement of Community Involvement (SCI).

#### **5 NEXT STEPS**

5.1 The results of the public consultation will be reported back to Executive Board and will inform changes for a revised DALP, which will then also be subject to a second six week public consultation. Following this, the DALP will be submitted to the Secretary of State for examination in autumn 2018. Following the public examination, and taking into consideration the Inspector's Report, it is anticipated that the Council will then adopt the DALP as a formal statutory document under the Planning Acts.

#### **6 POLICY IMPLICATIONS**

6.1 The Delivery and Allocations Local Plan is set to replace the remainder of the Unitary Development Plan and Proposals Map that has not already been replaced by the Halton Core Strategy or the Joint Waste Local Plan. It will also replace and update a number of policies within the current Core Strategy to reflect the most up to date evidence base.

6.2 The Delivery and Allocations Local Plan will therefore be a key policy document for the future development of the Borough and the Council's investment, regeneration and economic prosperity strategies.

#### **7 IMPLICATIONS FOR THE COUNCIL'S PRIORITIES**

##### **7.1 Healthy Halton**

The DALP document contains a wide variety of policy content focussed on addressing the Borough's health problems; efforts to address health problems through the maintenance of well-designed places and

spaces, through the support of accessible sustainable travel options and through the provision of a healthy, green local environment.

## **7.2 Halton's Urban Renewal**

Through the employment and housing allocations, Key Areas of Change and Investment and Regeneration area policies, the DALP highlights policy approaches to encourage, urban renewal, either on a local scale or on a larger scale in association with some of the major regeneration and development projects affecting the Borough over the plan period.

## **7.3 Children and Young People in Halton**

A significant component of the content of the DALP draft document is aimed at raising aspirations of younger people and supporting the provision of opportunities for them to enter higher education and employment. The aim to safeguard and enhance learning opportunities through the protection and improvement of physical infrastructure associated with educational establishments, as well as supporting the plans and policies of the Council's learning partners.

## **7.4 Employment, Learning and Skills in Halton**

The DALP supports the maintenance and enhancement of the Borough's economy and supports economic growth.

## **7.5 Safer Halton**

Making Halton safer is a key consideration for the DALP Document aiming to ensure that Halton's communities, businesses and visitors enjoy access to a safe and sustainable physical environment with natural and man-made risks and hazards being minimised.

# **8 RISK ANALYSIS**

8.1 At this current stage of policy making it is important to ensure that the document meets the Government legal requirements for local plans, so that the DALP can progress towards adoption. This will be documented as supporting information for the draft DALP to ensure and demonstrate compliance.

8.2 The main risk to the production of the DALP are the limited resources to produce the document. There is a possibility that the timetable outlined above will not be met, and thus the eventual adoption of the document will be delayed. It is anticipated that the potential release of land within the Green Belt will generate a high level of public interest. Clear communication and public involvement will therefore be necessary at all stages.

- 8.3 Further risks include changes to Government policy, regulations and legislation. For example changes to the methodology for calculating the 'Objectively Assessed Need' for housing are currently being consulted upon, that may supersede / invalidate the previous work commissioned by the Council necessitating a change in the housing numbers within the Plan.

## **9 EQUALITY AND DIVERSITY ISSUES**

- 9.1 An integral part of the DALP document is the support of a socially inclusive community that takes into account diversity and seeks to breaking down unnecessary barriers and exclusions in a manner that benefits the entire Borough. The EqIA demonstrates whether the policies have any significant implications for Halton's communities and how potential effects can be mitigated.

## **10 REASON FOR DECISION**

- 10.1 The Delivery and Allocations Local Plan will form part of the statutory development plan for the Borough. Legislation allows the Council's Executive Board to approve draft plans for public consultation. Later stages will need the approval of Full Council.

## **11 ALTERNATIVE OPTIONS CONSIDERED**

- 11.1 The Council has a statutory duty to prepare and keep up-to-date a Local Plan for its area. This report is seeking approval for the first stage of public consultation on the proposed Local Plan. Should the Council choose not to prepare a Local Plan, it risks being directed to do so by the Secretary of State or having the Secretary of State impose a Plan upon the Borough.

## **12 IMPEMENTATION DATE**

- 12.1 Officers will publish and advertise the documentation for public consultation as soon as practicable after the date of committee.

## **13 LIST OF BACKGROUND PAPERS UNDER SECTION 100D OF THE LOCAL GOVERNMENT ACT 1972**

<b>Document</b>	<b>Place of Inspection</b>	<b>Contact Officer</b>
Saved Policies of the Halton Unitary Development Plan	Municipal Building, Widnes	Alasdair Cross

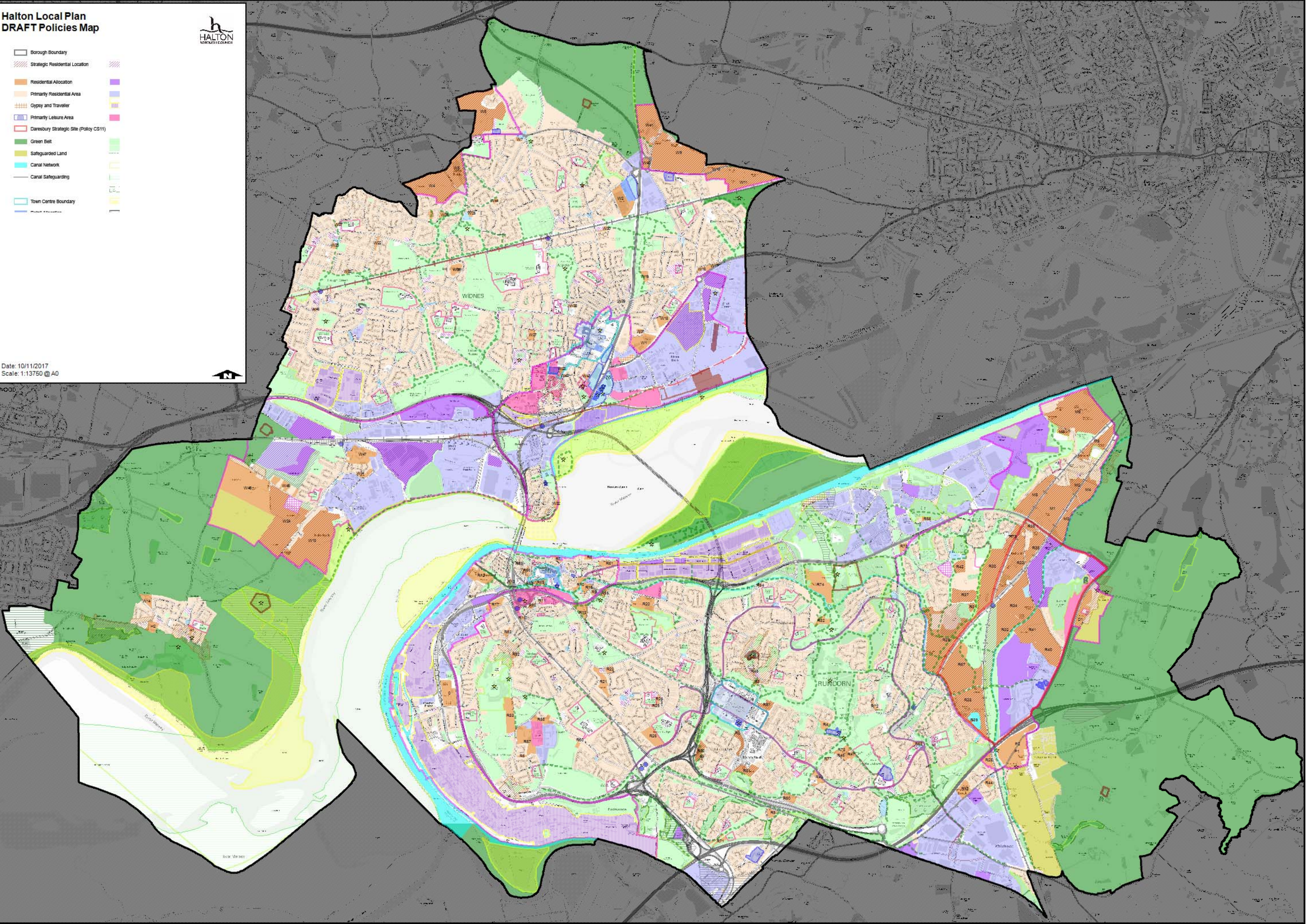
Halton UDP Proposals Map	Municipal Building, Widnes	Alasdair Cross
Halton Local Development Scheme	Municipal Building, Widnes	Alasdair Cross
The Town and Country Planning (Local	Municipal Building, Widnes	Alasdair Cross
Planning) (England) Regulations 2012	Municipal Building, Widnes	Alasdair Cross
National Planning Policy Framework (2012)	Municipal Building, Widnes	Alasdair Cross
Halton Core Strategy Local Plan (2013)	Municipal Building, Widnes	Alasdair Cross

**Halton Local Plan  
DRAFT Policies Map**



- Borough Boundary
- Strategic Residential Location
- Residential Allocation
- Primarily Residential Area
- Gypsy and Traveller
- Primarily Leisure Area
- Daresbury Strategic Site (Policy CS11)
- Green Belt
- Safeguarded Land
- Canal Network
- Canal Safeguarding
- Town Centre Boundary
- Product Allocation

Date: 10/11/2017  
Scale: 1:13750 @ A0





By virtue of paragraph(s) 3, 5 of Part 1 of Schedule 12A  
of the Local Government Act 1972.

Document is Restricted